



ROARING FORTIES™

AUSTRALIAN MADE LIFE RAFTS, LIFE JACKETS & PERSONAL FLOTATION DEVICES

Contact: Safety Marine Australia
37 Levanswell Rd, Moorabbin, VIC 3189

Tel: 03 9555 5211

Fax: 03 9553 4380

web: www.safetymarineaust.com.au
email: sales@safetymarineaust.com.au



AUSTRALIAN MADE

ROARING FORTIES™ Open Reversible Life Raft



The **ROARING FORTIES™** Open Reversible Life Raft (ORL) platforms are designed and manufactured to conform to the High Speed Craft (HSC) Code Annex 11. This series comes in a range of sizes from 4 to 25 persons.

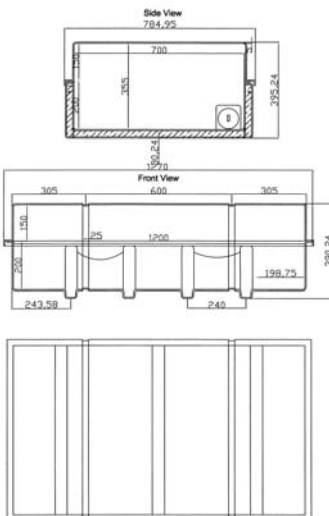
The ORLs consist of two inflatable chambers, each capable of supporting the full weight of your personnel.

The ORL rafts (buoyancy tubes) are made from heavy duty US Coast Guards approved neoprene fabric

ORL come complete with lifelines, boarding ramps, boarding handles, sea lights and deep water-pockets on each chamber.

ORL will enable easy boarding and inflating no matter which method of inflation is used.

The ORL rafts are packed in Fibre glass container. The containers are lip sealed. Hence, it is water tight if secured properly.



Drawings w/ measurements for 12 - 25 Person Container



12 - 25 Person Container Side View



12 - 25 Person Container Top View



4 - 10 Person Container



ROARING FORTIES™

AUSTRALIAN MADE LIFE RAFTS, LIFE JACKETS & PERSONAL FLOTATION DEVICES

Contact: Safety Marine Australia
37 Levenswell Rd, Moorabbin, VIC 3189

Tel: 03 9555 5211

Fax: 03 9553 4380

web: www.safetymarineaust.com.au
email: sales@safetymarineaust.com.au



AUSTRALIAN MADE

SPECIFICATIONS FOR ROARING FORTIES™ OPEN REVERSIBLE LIFE RAFT

APPROVAL:	Conforms to High Speed Craft (HSC) Code Annex 11
FABRIC:	US Coast Guard Approved Heavy Duty Neoprene Fabric
CONTAINER:	Fibre Glass Lip Sealed Container
DIMENSIONS:	See Chart Below
WEIGHT:	See Chart Below
SERVICE INTERVAL:	ANNUAL SERVICE OR AFTER OPERATION ***SERVICE TO BE CARRIED OUT IN A SMA APPROVED SERVICE STATION***
COUNTRY OF ORIGIN:	AUSTRALIA

(CONTAINER)

SIZE	DIMENSIONS	WEIGHT	RAFT FLOOR SURFACE AREA
4 Person	320x590x840mm	Approx. 43kg	in excess of 1.5m ²
6 Person	320x590x840mm	Approx. 48kg	In excess of 2.3m ²
8 Person	385x590x840mm	Approx. 53kg	In excess of 3.0m ²
10 Person	385x590x840mm	Approx. 58kg	In excess of 3.72m ²
12 Person	1270x785x390mm	Approx. 77kg	In excess of 4.46m ²
15 Person	1270x785x390mm	Approx. 88kg	In excess of 5.58m ²
20 Person	1270x785x390mm	Approx. 112kg	In excess of 7.44m ²
25 Person	1270x785x390mm	Approx. 128kg	In excess of 9.3m ²

ROARING FORTIES™ OPEN REVERSIBLE LIFE RAFT EQUIPMENT PACKING LIST

ITEMS/DESCRIPTION	QUANTITY							
	4 P	6 P	8 P	10 P	12 P	15 P	20 P	25 P
Bag, Equipment	1	1	1	1	1	1	1	1
Bailer Collapsible	1	1	1	1	1	1	1	1
Battery D Cell	4	4	4	4	4	4	4	4
Bellows 2 Way	1	1	1	1	1	1	1	1
Torch Bulb	1	1	1	1	1	1	1	1
Sea Drogue	1	1	1	1	1	1	1	1
First Aid Kit for Coastal	1	1	1	1	1	1	1	1
Temporary Repair Kit	1	1	1	1	1	1	1	1
Line Rescue Bare	1	1	1	1	1	1	1	1
Paddles	2	2	2	2	2	2	2	2
Rescue Quiot	1	1	1	1	1	1	1	1
Signal Mirror	1	1	1	1	1	1	1	1
30ft Cord Sachet	1	1	1	1	1	0	0	0
45 ft Cord Sachet	0	0	0	0	0	1	1	1
Signal Hand Red	2	2	2	2	2	2	2	2
Sponge	2	2	2	2	2	2	2	2
Leak Stopper Set	1	1	1	1	1	1	1	1
Waterproof Torch w/o batteries	1	1	1	1	1	1	1	1
Whistle	1	1	1	1	1	1	1	1
Deflation Plug	2	2	2	2	2	2	2	2

Chocks and Straps for 4 - 10 Person Containers are available and optional.